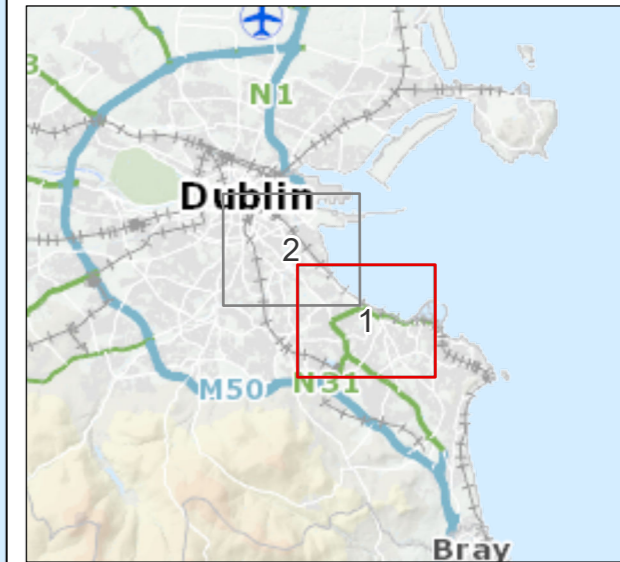
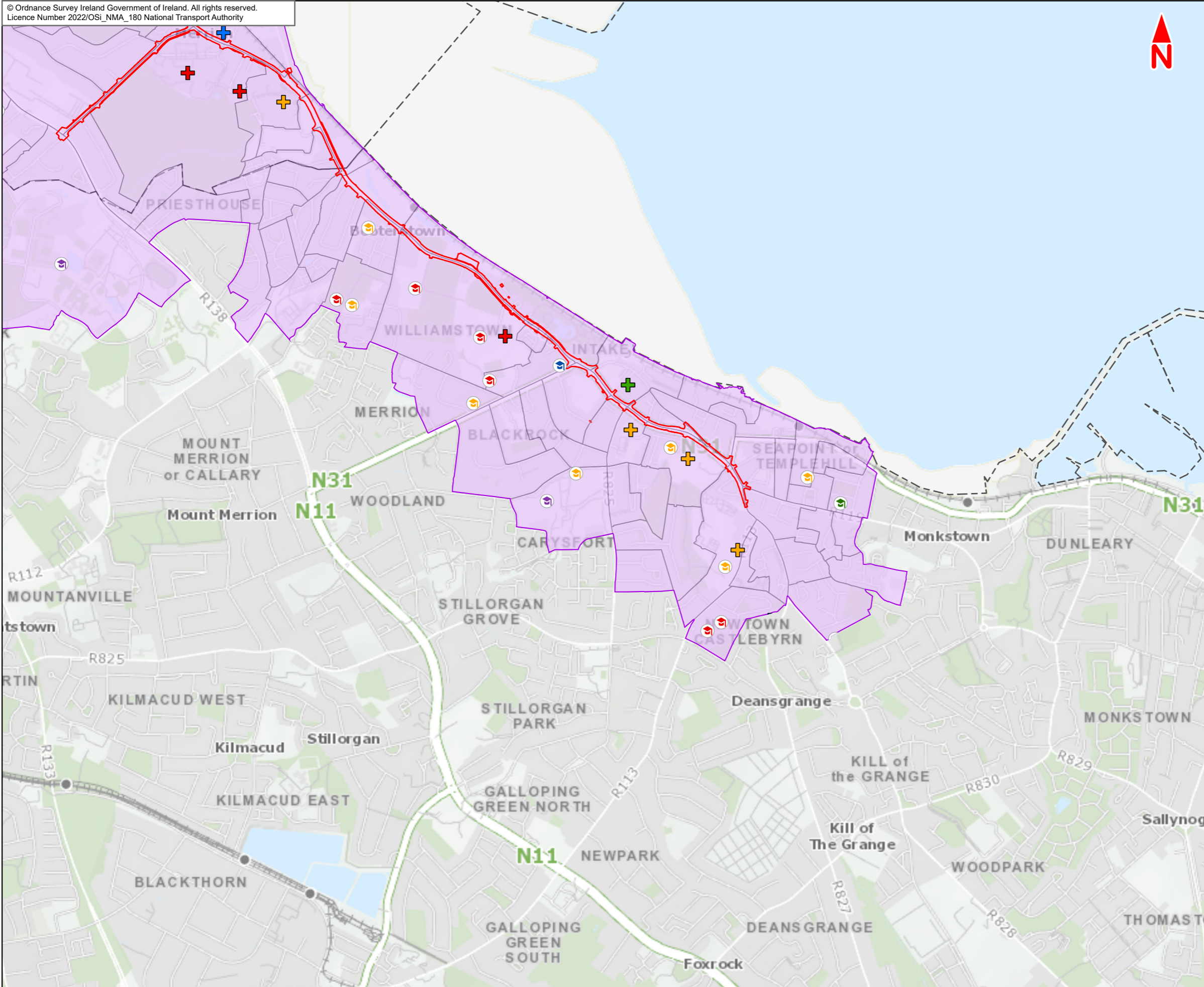


The background is a vibrant yellow. On the right side, there are several overlapping, rounded rectangular shapes in shades of blue and green. These shapes are connected by thin yellow lines, creating a network-like structure. Several white circles of varying sizes are scattered throughout the design, some appearing to be part of the blue and green shapes. The overall aesthetic is modern and geometric.

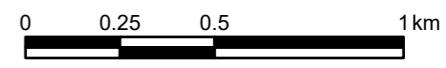
11.1
Human Health Study Area



- Legend :**
- Belfield / Blackrock to City Centre Core Bus Corridor Scheme
 - Small Area (SA; not classified as disadvantaged by Pobal HP Index 2016)
 - Human Health Study Area
 - 500m Buffer from Proposed Route Centreline
 - Local Authority Boundary
- Educational Institute**
- + Primary School
 - + Secondary School
 - + College, University or Other Third Level Institution
 - + Special Needs School
 - + Other educational institute
- Health Service**
- + Hospital
 - + Health Centre
 - + Nursing Home
 - + Other service

No SAs classified as disadvantaged, very disadvantaged or extremely disadvantaged in 2016.

This drawing is not to be used in whole or in part other than for the intended purpose and project as defined on this drawing. Contains Irish Public Sector Data licensed under a Creative Commons Attribution 4.0 International (CC BY 4.0) license.



BAR SCALE

Disclaimer
a. © National Transport Authority (NTA) 2022. This drawing is confidential and the copyright in it is owned by NTA. This drawing must not be either loaned, copied or otherwise reproduced in whole or in part or used for any purpose without the prior permission of NTA.
b. This drawing is to be used for the design element identified in the titleblock. Other information shown is to be considered indicative only. The drawing is to be read in conjunction with all other relevant design drawings.
c. O.S. data used for plans are printed under © Ordnance Survey Ireland Government of Ireland. All rights reserved. Licence Number 2022/OSI_NMA_180 National Transport Authority. All elevations are in metres and relate to OSI Geoid Model (OSGM15) Mean Head. All Co-ordinates are in Irish

Transverse Mercator Grid (ITM) as defined by OSI active local GPS station.
d. Information concerning the position of apparatus shown on this drawing is based on drawings supplied by the utility owners and/or the utility works contractor, whilst every care has been taken in the preparation of this drawing, positions should be taken as approximate and are intended for general guidance only and no representation is made by the NTA as to the accuracy, completeness, sufficiency or otherwise of this drawing and the position of the apparatus. The information contained herein does not purport to be comprehensive or final as the apparatus is subject to being altered and/or superceded. Recipients should not rely on this information. Any liabilities are hereby expressly disclaimed.

e. The information contained herein has been provided by the NTA but does not purport to be comprehensive or final. Recipients should not rely on the information. Neither the NTA nor any of its directors, officers, employees, agents, stakeholders or advisers make any representation or warranty as to, or accept any liability or responsibility in relation to, the adequacy, accuracy, reasonableness or completeness of the information provided as part of this document or any matter on which the information is based (including but not limited to loss or damage arising as a result of reliance by recipients on the information or any part of it. Any liabilities are hereby expressly disclaimed.



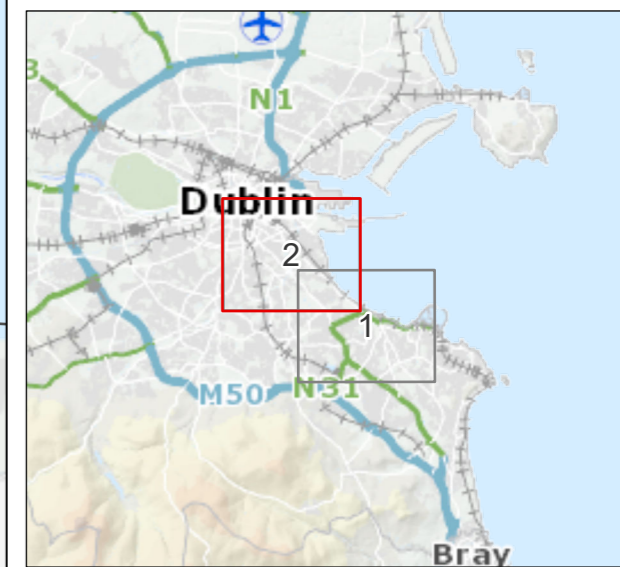
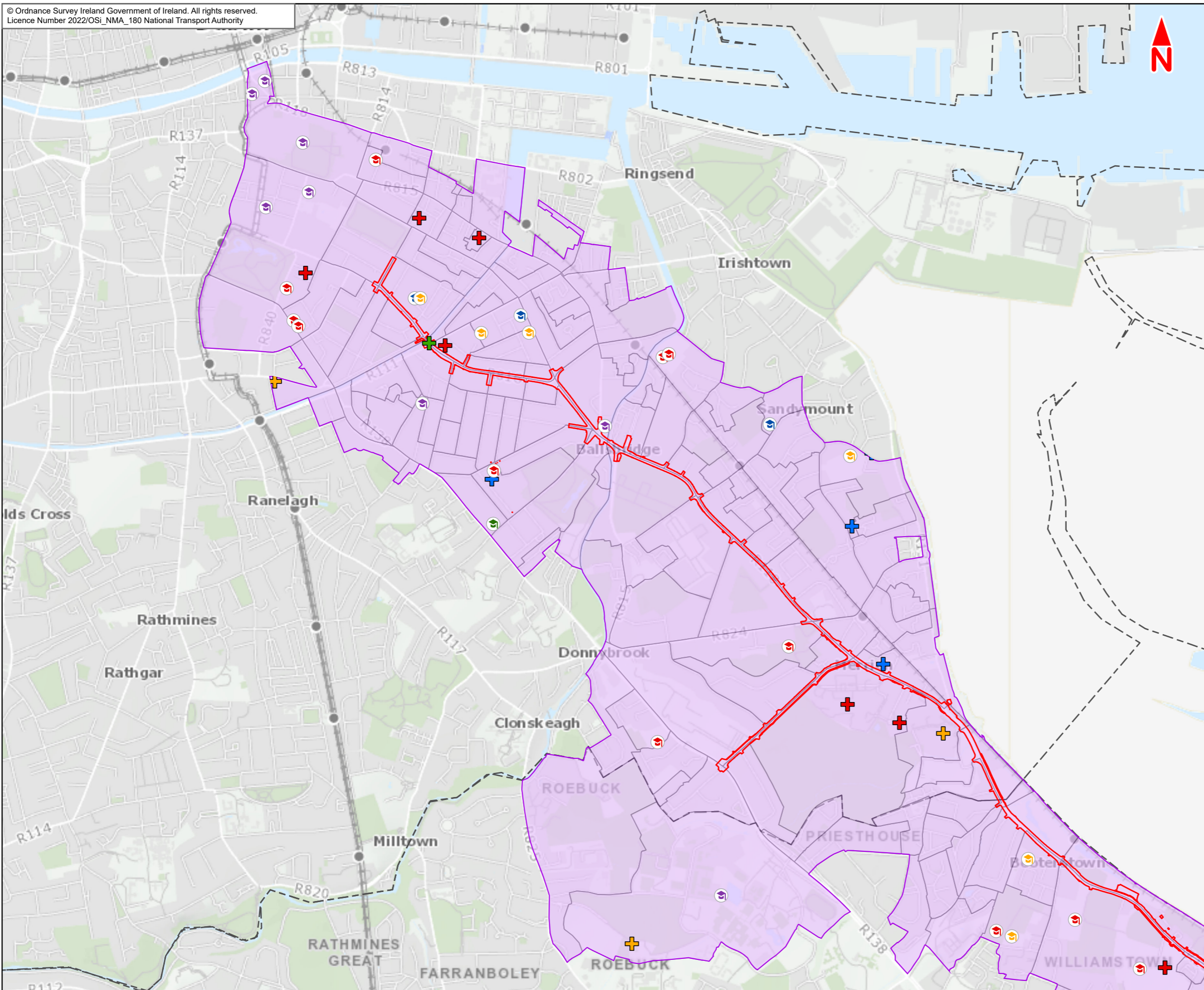
Rev	Date	Drn	Chk'd	App'd	Description
M01	Apr 2022	KJ	PW	DK	ISSUE FOR PHASE 4 : PLANNING

Client
NTA
Udarás Náisiúnta Iompair
National Transport Authority

Consultant
JACOBS
ARUP SYSTRA

Programme Title BUSCONNECTS DUBLIN CORE BUS CORRIDORS INFRASTRUCTURE WORKS				
Drawing Title Belfield/Blackrock to City Centre Core Bus Corridor Scheme Figure 11.1 Human Health Study Area				
Drawing File Name BCIDE-JAC-ENV_HH-1415_XX_00-DR-GG-0001	Sheet Number 1 of 2	Status A	Rev M01	

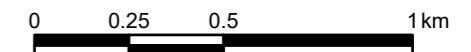
Date 21/04/2022	Scale @ A3 1:20000	Drawn KJ	Checked PW	Approved DK
Project Code BCIDE	Originator Code JAC	QMS Code		



- Legend :**
- Belfield / Blackrock to City Centre Core Bus Corridor Scheme
 - Small Area (SA; not classified as disadvantaged by Pobal HP Index 2016)
 - Human Health Study Area
 - 500m Buffer from Proposed Route Centreline
 - Local Authority Boundary
- Educational Institute**
- 🎓 Primary School
 - 🎓 Secondary School
 - 🎓 College, University or Other Third Level Institution
 - 🎓 Special Needs School
 - 🎓 Other educational institute
- Health Service**
- + Hospital
 - + Health Centre
 - + Nursing Home
 - + Other service

No SAs classified as disadvantaged, very disadvantaged or extremely disadvantaged in 2016.

This drawing is not to be used in whole or in part other than for the intended purpose and project as defined on this drawing. Contains Irish Public Sector Data licensed under a Creative Commons Attribution 4.0 International (CC BY 4.0) license.



BAR SCALE

Disclaimer
a. © National Transport Authority (NTA) 2022. This drawing is confidential and the copyright in it is owned by NTA. This drawing must not be either loaned, copied or otherwise reproduced in whole or in part or used for any purpose without the prior permission of NTA.
b. This drawing is to be used for the design element identified in the titleblock. Other information shown is to be considered indicative only. The drawing is to be read in conjunction with all other relevant design drawings.
c. O.S. data used for plans are printed under © Ordnance Survey Ireland Government of Ireland. All rights reserved. Licence Number 2022/OSI_NMA_180 National Transport Authority. All elevations are in metres and relate to OSI Geoid Model (OSGM15) Mean Head. All Co-ordinates are in Irish

Transverse Mercator Grid (ITM) as defined by OSI active local GPS station.
d. Information concerning the position of apparatus shown on this drawing is based on drawings supplied by the utility owners and/or the utility works contractor, whilst every care has been taken in the preparation of this drawing, positions should be taken as approximate and are intended for general guidance only and no representation is made by the NTA as to the accuracy, completeness, sufficiency or otherwise of this drawing and the position of the apparatus. The information contained herein does not purport to be comprehensive or final as the apparatus is subject to being altered and/or superseded. Recipients should not rely on this information. Any liabilities are hereby expressly disclaimed.

e. The information contained herein has been provided by the NTA but does not purport to be comprehensive or final. Recipients should not rely on the information. Neither the NTA nor any of its directors, officers, employees, agents, stakeholders or advisers make any representation or warranty as to, or accept any liability or responsibility in relation to, the adequacy, accuracy, reasonableness or completeness of the information provided as part of this document or any matter on which the information is based (including but not limited to loss or damage arising as a result of reliance by recipients on the information or any part of it. Any liabilities are hereby expressly disclaimed.



Rev	Date	Drn	Chk'd	App'd	Description
M01	Apr 2022	KJ	PW	DK	ISSUE FOR PHASE 4 : PLANNING

Client NTA Udarás Náisiúnta Iompair National Transport Authority		Consultant JACOBS ARUP SYSTRA		
Date 21/04/2022	Scale @ A3 1:20000	Drawn KJ	Checked PW	Approved DK
Project Code BCIDE	Originator Code JAC	QMS Code		

Programme Title BUSCONNECTS DUBLIN CORE BUS CORRIDORS INFRASTRUCTURE WORKS				
Drawing Title Belfield/Blackrock to City Centre Core Bus Corridor Scheme Figure 11.1 Human Health Study Area				
Drawing File Name BCIDE-JAC-ENV_HH-1415_XX_00-DR-GG-0002	Sheet Number 2 of 2	Status A	Rev M01	